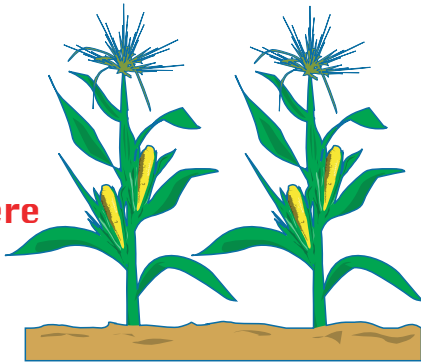
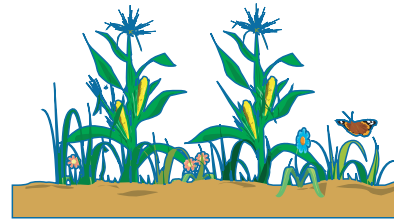


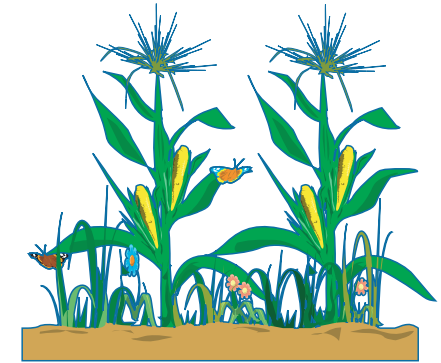
**Umweltschonendere
Landwirtschaft**



**Bisherige intensive
Landwirtschaft**

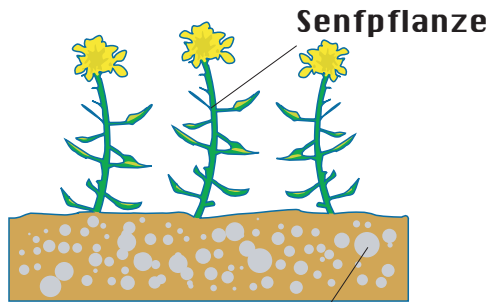


**Bisherige extensive
Landwirtschaft**

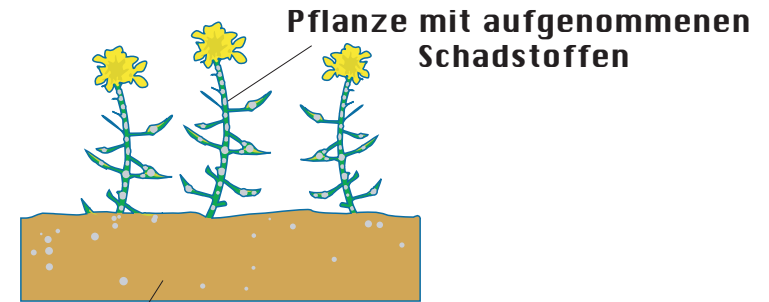


**Neuartige Landwirtschaft
mit transgenen Kulturpflanzen**

**Biologische
Sanierung**

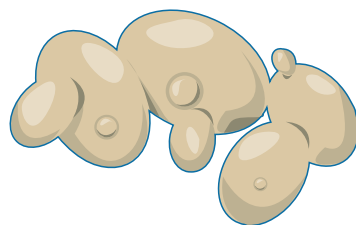


Schadstoffhaltiger Boden

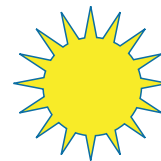


Gereinigter Boden

**Nachweis
von Umweltgiften**



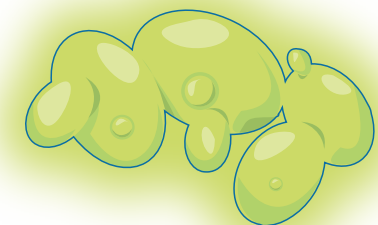
**Gentechnisch
veränderte Hefe**



UV-Strahlen



Giftstoff



Fluoreszierende Hefezellen